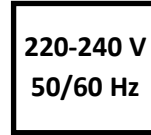
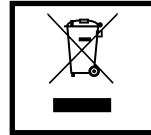


LED DOWNLIGHT

INESA

Installation instructions

Szerelési útmutató



Item NO.	Color temperature (K)	Voltage (V)	Power (W)	Luminous flux (Lm)	CRI (Ra)	Led Qty (Pcs)	Beam angle (°)	Size (mm)
PA2806C-M-12	3000/4000/6000	AC220-240	12W	780/780/780	≥80	65	110	φ 172*39
PA2808C-M-15			15W	780/1000/1000	≥80	80	110	φ 226*39
PA2808C-M-18			18W	1170/1170/1170	≥80	95	110	φ 226*39



Turn power off before installation or removal

Szerelés előtt feszültségmentesítse a hálózatot!

Luminaire may fall off if not installed properly

Helytelen szerelés esetén a világítótest leeshet.

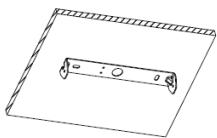
Installation, maintenance and removal can only be performed by trained personnel

Szerelést, karbantartást csak képzett személy végezhet.

Recessed into ceiling

Álmennyezeti szerelés

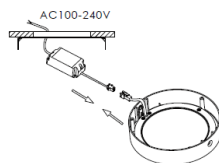
1



Fix bracket

Rögzítse a kengyelt

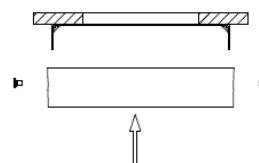
2



Connect the driver to the mains

Csatlakoztassa a meghajtót a hálózathoz

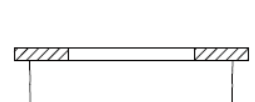
3



Install the lamp to the bracket

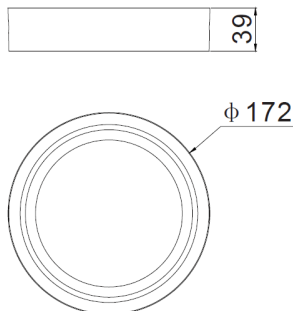
Rögzítse a lámpát a kengyelre

4

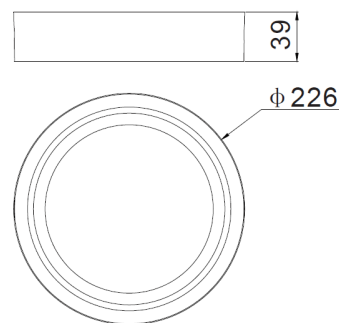


Installation finished

Elkészült a szereléssel



PA2806C-M-12



PA2808C-M-15

PA2808C-M-18